

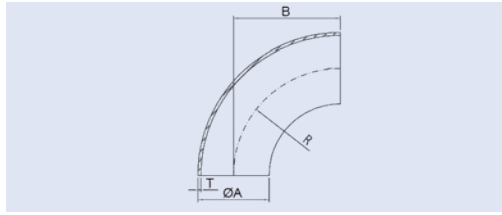
Getränkeleitungszubehör

Sanitary Fittings



Formstücke
Verbindungen
Ventile

Fittings
Connections
Valves

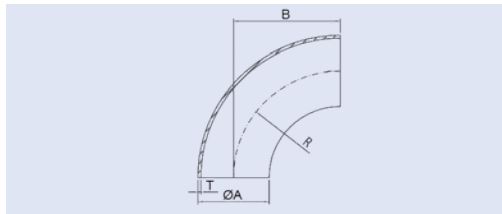


Geschweißte Rohrbogen 90°, DIN / Reihe 1
Welded elbows 90°, DIN Row 1

DIN 11852-BS-90, Ra < 0,8 µm
poliert / polished, für Rohre / for pipes DIN 11850
Material 1.4301/1.4307, AISI 304/304L

Rohranschlussmaß				Gewicht
Nominal Pipe Size				Weight

DN	A	T	B	R	kg	Artikelnummer	
						Item No.	
25	28,0	1,5	50,0	50,0	0,0800	A1406000GG0000252W	■
32	34,0	1,5	55,0	55,0	0,1100	A1406000GG0000322W	■
40	40,0	1,5	60,0	60,0	0,1330	A1406000GG0000402W	■
50	52,0	1,5	70,0	70,0	0,2000	A1406000GG0000502W	■

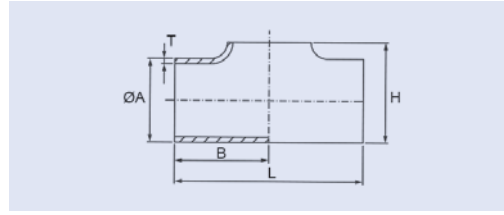


Geschweißte Rohrbogen 90°, DIN / Reihe 2
Welded elbows 90°, DIN Row 2

DIN 11852-BS-90, Ra < 0,8 µm
poliert / polished, für Rohre / for pipes DIN 11850
Material 1.4301/1.4307, AISI 304/304L

Rohranschlussmaß				Gewicht
Nominal Pipe Size				Weight

DN	A	T	B	R	kg	Artikelnummer	
						Item No.	
25	29,0	1,5	50,0	50,0	0,0800	A14060A0GG0000252W	■
32	35,0	1,5	55,0	55,0	0,1100	A14060A0GG0000322W	■
40	41,0	1,5	60,0	60,0	0,1330	A14060A0GG0000402W	■
50	53,0	1,5	70,0	70,0	0,2000	A14060A0GG0000502W	■

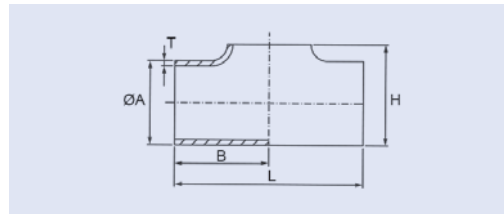


Geschweißte T-Stücke, kurz, DIN / Reihe 1
Welded tees, short, DIN Row 1

DIN 11852-TK, Ra < 0,8 µm
poliert / polished, für Rohre / for pipes DIN 11850
Material 1.4301/1.4307, AISI 304/304L

Rohranschlussmaß		Gewicht
Nominal Pipe Size		Weight

DN	A	T	B	H	L	kg	Artikelnummer	
								Item No.
25	28,0	1,5	50,0	29,5	100,0	0,1000	A1403000GG0000252W	■
32	34,0	1,5	55,0	36,0	110,0	0,1300	A1403000GG0000322W	■
40	40,0	1,5	60,0	42,5	120,0	0,1700	A1403000GG0000402W	■
50	52,0	1,5	70,0	55,0	140,0	0,2600	A1403000GG0000502W	■

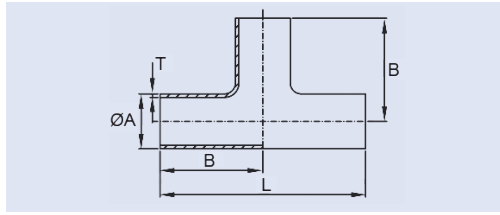


Geschweißte T-Stücke, kurz, DIN / Reihe 2
Welded tees, short, DIN Row 2

DIN 11852-TK, Ra < 0,8 µm
poliert / polished, für Rohre / for pipes DIN 11850
Material 1.4301/1.4307, AISI 304/304L

Rohranschlussmaß		Gewicht
Nominal Pipe Size		Weight

DN	A	T	B	H	L	kg	Artikelnummer	
								Item No.
25	29,0	1,5	50,0	29,5	100,0	0,1000	A14030A0GG0000252W	■
32	35,0	1,5	55,0	36,0	110,0	0,1300	A14030A0GG0000322W	■
40	41,0	1,5	60,0	42,5	120,0	0,1700	A14030A0GG0000402W	■
50	53,0	1,5	70,0	55,0	140,0	0,2600	A14030A0GG0000502W	■

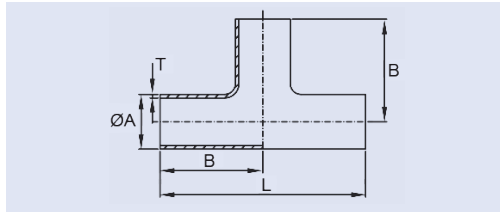


Geschweißte T-Stücke, lang, DIN / Reihe 1
Welded tees, long, DIN Row 1

DIN 11852-TS, Ra < 0,8 µm
poliert / polished, für Rohre / for pipes DIN 11850
Material 1.4301/1.4307, AISI 304/304L

Rohranschlussmaß				Gewicht
Nominal Pipe Size				Weight

DN	A	T	B	L	kg	Artikelnummer	
						Item No.	
25	28,0	1,5	50,0	100,0	0,1300	A1403100GG0000252W	■
32	34,0	1,5	55,0	110,0	0,1700	A1403100GG0000322W	■
40	40,0	1,5	60,0	120,0	0,2200	A1403100GG0000402W	■
50	52,0	1,5	70,0	140,0	0,3200	A1403100GG0000502W	■

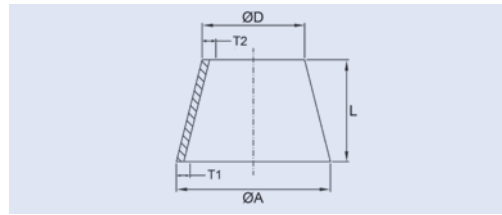


Geschweißte T-Stücke, lang, DIN / Reihe 2
Welded tees, long, DIN Row 2

DIN 11852-TS, Ra < 0,8 µm
poliert / polished, für Rohre / for pipes DIN 11850
Material 1.4301/1.4307, AISI 304/304L

Rohranschlussmaß				Gewicht
Nominal Pipe Size				Weight

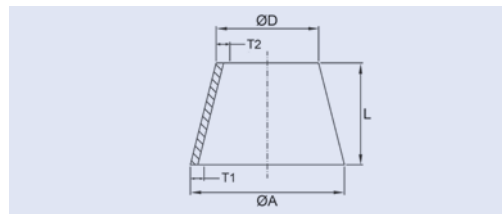
DN	A	T	B	L	kg	Artikelnummer	
						Item No.	
25	29,0	1,5	50,0	100,0	0,1300	A14031A0GG0000252W	■
32	35,0	1,5	55,0	110,0	0,1700	A14031A0GG0000322W	■
40	41,0	1,5	60,0	120,0	0,2200	A14031A0GG0000402W	■
50	53,0	1,5	70,0	140,0	0,3200	A14031A0GG0000502W	■



Konzentrisches Reduzierstücke, DIN / Reihe 1
Concentric reducers, DIN Row 1

DIN 11852-RK, Ra < 0,8 µm
poliert / polished, für Rohre / for pipes DIN 11850
Material 1.4301/1.4307, AISI 304/304L

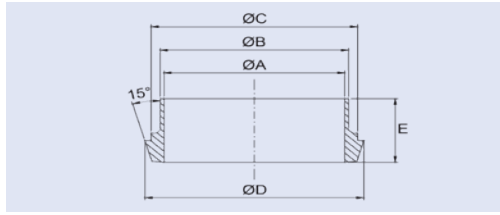
Rohranschlussmaß						Gewicht		
Nominal Pipe Size						Weight		
DN	A	T1	D	T2	L	kg	Artikelnummer	
								Item No.
25/20	28,0	1,5	22,0	1,5	11,0	0,0100	A1405000GG0250202W	■
32/20	34,0	1,5	22,0	1,5	22,0	0,0220	A1405000GG0320202W	■
32/25	34,0	1,5	28,0	1,5	11,0	0,0120	A1405000GG0320252W	■
40/32	40,0	1,5	34,0	1,5	11,0	0,0150	A1405000GG0400322W	■
50/25	52,0	1,5	28,0	1,5	44,0	0,0630	A1405000GG0500252W	■
50/32	52,0	1,5	34,0	1,5	33,0	0,0510	A1405000GG0500322W	■
50/40	52,0	1,5	40,0	1,5	22,0	0,0360	A1405000GG0500402W	■



Konzentrisches Reduzierstücke, DIN / Reihe 2
Concentric reducers, DIN Row 2

DIN 11852-RK, Ra < 0,8 µm
poliert / polished, für Rohre / for pipes DIN 11850
Material 1.4301/1.4307, AISI 304/304L

Rohranschlussmaß						Gewicht		
Nominal Pipe Size						Weight		
DN	A	T1	D	T2	L	kg	Artikelnummer	
								Item No.
25/20	29,0	1,5	23,0	1,5	11,0	0,0100	A14050A0GG0250202W	■
32/20	35,0	1,5	23,0	1,5	22,0	0,0230	A14050A0GG0320202W	■
32/25	35,0	1,5	29,0	1,5	11,0	0,0120	A14050A0GG0320252W	■
40/32	41,0	1,5	35,0	1,5	11,0	0,0150	A14050A0GG0400322W	■
50/25	53,0	1,5	29,0	1,5	44,0	0,0650	A14050A0GG0500252W	■
50/32	53,0	1,5	35,0	1,5	33,0	0,0520	A14050A0GG0500322W	■
50/40	53,0	1,5	41,0	1,5	22,0	0,0370	A14050A0GG0500402W	■

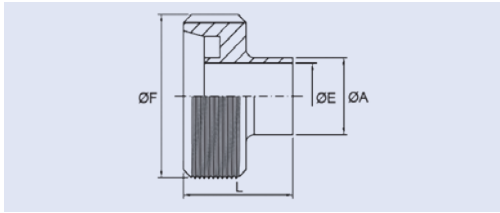


Kegelstutzen, Schweißende, DIN / Reihe 2
Liner, weld end, DIN Row 2

DIN 11851-SD, Ra < 0,8 µm
Material 1.4301/1.4307, AISI 304/304L

Rohranschlussmaß				Gewicht	
Nominal Pipe Size				Weight	

DN	A	B	C	D	E	kg	Artikelnummer	
								Item No.
25	26,0	29,0	35,0	44,0	22,0	0,0830	A 1410022ZZ0000252F	■
32	32,0	35,0	41,0	50,0	25,0	0,1020	A 1410022ZZ0000322F	■
40	38,0	41,0	48,0	56,0	26,0	0,1220	A 1410022ZZ0000402F	■
50	50,0	53,0	61,0	68,5	28,0	0,1720	A 1410022ZZ0000502F	■

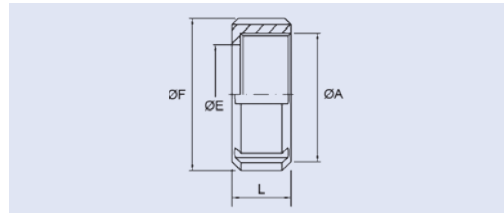


Gewindestutzen, Schweißende, DIN / Reihe 2
Male, weld end, DIN Row 2

DIN 11851-SC, Ra < 0,8 µm
Material 1.4301/1.4307, AISI 304/304L

Rohranschlussmaß				Gewicht	
Nominal Pipe Size				Weight	

DN	A	E	F	L	kg	Artikelnummer	
							Item No.
10	13,0	10,0	RD 28x1/8"	21,0	0,0400	A 1409022ZZ0000102F	○
15	19,0	16,0	RD 34x1/8"	21,0	0,0500	A 1409022ZZ0000152F	○
20	23,0	20,0	RD 44x1/6"	24,0	0,0900	A 1409022ZZ0000202F	○
25	29,0	26,0	RD 52x1/6"	29,0	0,1140	A 1409022ZZ0000252F	■
32	35,0	32,0	RD 58x1/6"	32,0	0,1340	A 1409022ZZ0000322F	■
40	41,0	38,0	RD 65x1/6"	33,0	0,1650	A 1409022ZZ0000402F	■
50	53,0	50,0	RD 78x1/6"	35,0	0,2260	A 1409022ZZ0000502F	■
65	70,0	66,0	RD 95x1/6"	40,0	0,3500	A 1409022ZZ0000652F	○
80	85,0	81,0	RD 110x1/4"	45,0	0,5200	A 1409022ZZ0000802F	○
100	104,0	100,0	RD 130x1/4"	54,0	0,6700	A 1409022ZZ0001002F	○

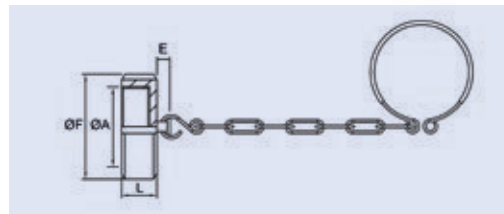


Nutmutter Round nut

DIN 11851-F, Ra < 0,8 µm
Material 1.4301/1.4307, AISI 304/304L

Rohranschlussmaß	Gewicht
Nominal Pipe Size	Weight

DN	A	E	F	L	kg	Artikelnummer	
							Item No.
10	RD 28x1/8"	19,0	38,0	18,0	0,0700	A1408001ZZ0000101F	○
15	RD 34x1/8"	25,0	44,0	18,0	0,0800	A1408001ZZ0000151F	○
20	RD 44x1/6"	31,0	54,0	20,0	0,1300	A1408001ZZ0000201F	○
25	RD 52x1/6"	32,5	63,0	21,0	0,1610	A1408001ZZ0000251F	■
32	RD 58x1/6"	36,0	70,0	21,0	0,2100	A1408001ZZ0000321F	■
40	RD 65x1/6"	49,0	78,0	21,0	0,2000	A1408001ZZ0000401F	■
50	RD 78x1/6"	62,0	92,0	22,0	0,2400	A1408001ZZ0000501F	■
65	RD 95x1/6"	80,0	112,0	25,0	0,3300	A1408001ZZ0000651F	○
80	RD 110x1/4"	94,0	127,0	29,0	0,8000	A1408001ZZ0000801F	○
100	RD 130x1/4"	115,0	148,0	31,0	1,0800	A1408001ZZ0001001F	○

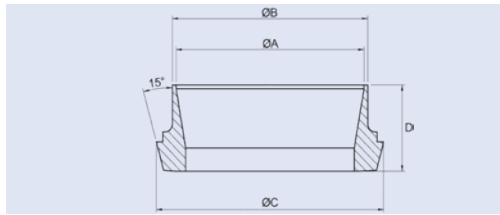


Blindmutter mit Kette End cap with chain

DIN 11851, Ra < 0,8 µm
Material 1.4301/1.4307, AISI 304/304L

Rohranschlussmaß	Gewicht
Nominal Pipe Size	Weight

DN	A	E	F	L	kg	Artikelnummer	
							Item No.
25	RD52x1/6"	10,0	63,0	21,0	0,2300	A1408006ZZ0000251F	■
32	RD58x1/6"	10,0	70,0	21,0	0,2680	A1408006ZZ0000321F	■
40	RD65x1/6"	10,0	78,0	21,0	0,3200	A1408006ZZ0000401F	■
50	RD78x1/6"	10,0	92,0	22,0	0,4200	A1408006ZZ0000501F	■

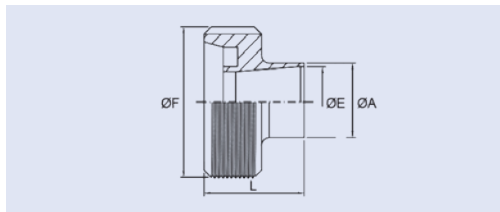


Kegelstutzen, Schweißende, ISO
Liner, weld end, ISO

DIN 11851, DIN / ISO, Ra < 0,8 µm
Material 1.4301/1.4307, AISI 304/304L

Rohranschlussmaß		Gewicht
Nominal Pipe Size		Weight

DN	A	B	C	D	kg	Artikelnummer	
						Item No.	
25	29,7	33,7	44,0	22,0	0,0920	A 1410026ZZ0000252F	■
32	38,4	42,4	50,0	25,0	0,1110	A 1410026ZZ0000322F	■
40	44,3	48,3	56,0	26,0	0,1500	A 1410026ZZ0000402F	■
50	56,3	60,3	68,0	28,0	0,2000	A 1410026ZZ0000502F	■

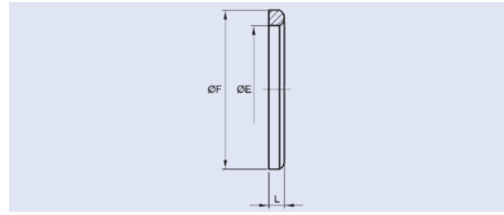


Gewindestutzen, Schweißende, ISO
Male, weld end, ISO

DIN 11851 DIN / ISO, Ra < 0,8 µm
Material 1.4301/1.4307, AISI 304/304L

Rohranschlussmaß		Gewicht
Nominal Pipe Size		Weight

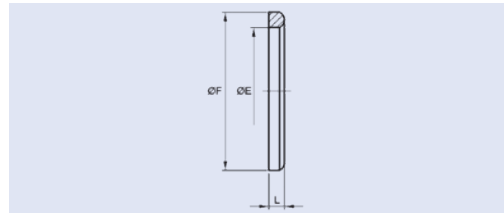
DN	A	E	L	F	kg	Artikelnummer	
						Item No.	
25	33,7	29,7	RD 52x1/6"	29,0	0,1310	A 1409026ZZ0000252F	■
32	42,4	38,4	RD 58x1/6"	32,0	0,1730	A 1409026ZZ0000322F	■
40	48,3	44,3	RD 65x1/6"	33,0	0,2200	A 1409026ZZ0000402F	■
50	60,3	56,3	RD 78x1/6"	35,0	0,3000	A 1409026ZZ0000502F	■



Dichtring
Gasket

DIN 11851-G, -40° bis / up to +140°
Material EPDM

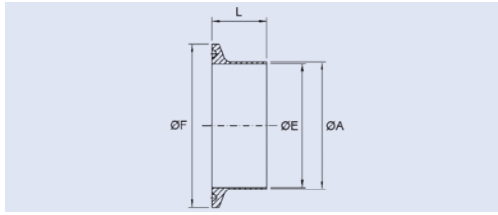
Rohranschlussmaß				Gewicht		
Nominal Pipe Size				Weight		
DN	E	F	L	kg	Artikelnummer	
					Item No.	
10	12,0	20,0	4,5	0,0030	C1415001EP000010BL	○
15	18,0	26,0	4,5	0,0030	C1415001EP000015BL	○
20	23,0	33,0	4,5	0,0030	C1415001EP000020BL	○
25	30,0	40,0	5,0	0,0030	C1415001EP000025BL	■
32	36,0	46,0	5,0	0,0030	C1415001EP000032BL	■
40	42,0	52,0	5,0	0,0040	C1415001EP000040BL	■
50	54,0	64,0	5,0	0,0040	C1415001EP000050BL	■
65	71,0	81,0	5,0	0,0040	C1415001EP000065BL	○
80	85,0	95,0	5,0	0,0040	C1415001EP000080BL	○
100	104,0	114,0	6,0	0,0040	C1415001EP000100BL	○



Dichtring
Gasket

DIN11851-G, -25° bis / up to +110°
Material NBR

Rohranschlussmaß				Gewicht		
Nominal Pipe Size				Weight		
DN	E	F	L	kg	Artikelnummer	
					Item No.	
25	30,0	40,0	5,0	0,0030	C1415001NB000025BU	■
32	36,0	46,0	5,0	0,0030	C1415001NB000032BU	■
40	42,0	52,0	5,0	0,0040	C1415001NB000040BU	■
50	54,0	64,0	5,0	0,0040	C1415001NB000050BU	■

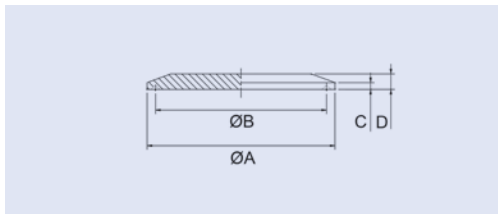


Klemmstutzen, Schweißenden, DIN / Reihe 2
Clamp ferrule, weld end, DIN Row 2

DIN 32676, Ra < 0,8 µm
Material 1.4301/1.4307, AISI 304/304L

Rohranschlussmaß		Gewicht
Nominal Pipe Size		Weight

DN	A	E	F	L	kg	Artikelnummer	
						Item No.	
15	19,0	16,0	34,0	18,0	0,0300	A1414A01ZZ0000152F	■
20	23,0	20,0	34,0	18,0	0,0270	A1414A01ZZ0000202F	■
25	29,0	26,0	50,5	21,5	0,0670	A1414A01ZZ0000252F	■
32	35,0	32,0	50,5	21,5	0,0560	A1414A01ZZ0000322F	■
40	41,0	38,0	50,5	21,5	0,0480	A1414A01ZZ0000402F	■
50	53,0	50,0	64,0	21,5	0,0700	A1414A01ZZ0000502F	■

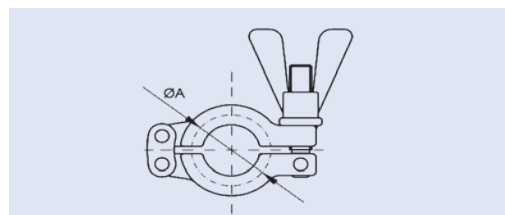


Klemm-Blinddeckel
Clamp blank cap

DIN 32676, Ra < 0,8 µm
Material 1.4301/1.4307, AISI 304/304L

Rohranschlussmaß		Gewicht
Nominal Pipe Size		Weight

DN	A	B	C	D	kg	Artikelnummer	
						Item No.	
15-20	34,0	27,5	2,85	6,4	0,0400	A1516001ZZ0000202F	■
25-40	50,4	43,6	2,84	6,4	0,0780	A1516001ZZ0001502F	■
50	63,9	56,3	2,84	6,4	0,1370	A1516001ZZ0002002F	■

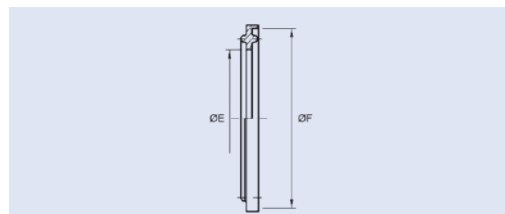


Doppelgelenk-Klammer Double joint-clamp

für Klemmverbindung DIN 32676
for clamping connection DIN 32676
Material 1.4301/1.4307, AISI 304/304L

Rohranschlussmaß		Gewicht
Nominal Pipe Size		Weight

DN	A			kg	Artikelnummer Item No.	
10-20	28,0			0,1610	A1513028CC0000341C	■
25-40	53,9			0,2500	A1513028CC0000511C	■
50	67,4			0,3030	A1513028CC0000641C	■

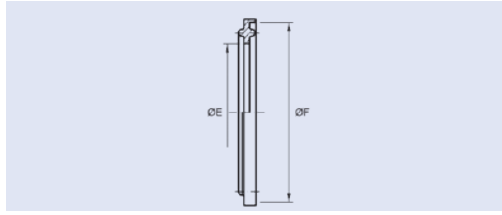


Dichtung Gasket

für Klemmverbindung DIN 32676
for clamping connection DIN 32676
DIN 32676-D, -40° bis / up to +140°
Material EPDM

Rohranschlussmaß		Gewicht
Nominal Pipe Size		Weight

DN	E	F		kg	Artikelnummer Item No.	
25	26,2	50,5		0,0060	C1415002EP000025BL	■
32	32,2	50,5		0,0060	C1415002EP000032BL	■
40	38,2	50,5		0,0060	C1415002EP000040BL	■
50	50,2	64,0		0,0060	C1415002EP000050BL	■



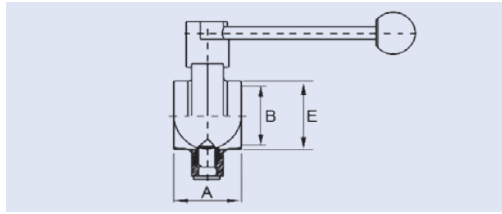
Dichtung

Gasket

für Klemmverbindung DIN 32676
for clamping connection DIN 32676
DIN 32676, -25° bis / up to +110°
Material NBR

Rohranschlussmaß			Gewicht
Nominal Pipe Size			Weight

DN	E	F	kg	Artikelnummer	
				Item No.	
25	26,2	50,5	0,0060	C1415002NB000025BU	■
32	32,2	50,5	0,0060	C1415002NB000032BU	■
40	38,2	50,5	0,0060	C1415002NB000040BU	■
50	50,2	64,0	0,0060	C1415002NB000050BU	■



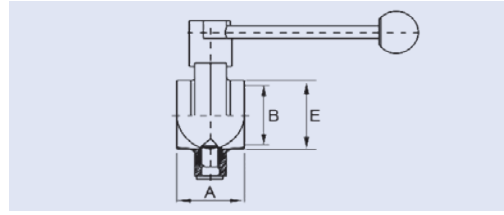
Scheibenventil, Schweißenden, DIN / Reihe 1

Butterfly valve, butt weld ends, DIN Row 1

DIN 11851-S-S, Ra < 0,8 µm
Material 1.4301/1.4307, AISI 304/304L

Rohranschlussmaß			Gewicht
Nominal Pipe Size			Weight

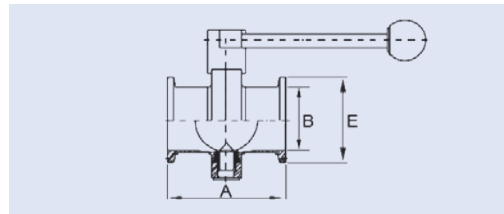
DN	A	B	E	kg	Artikelnummer	
					Item No.	
25	40,0	25,0	28,0	0,9930	A1401008EP0000251K	■
32	42,0	31,0	34,0	1,0800	A1401008EP0000321K	■
40	50,0	37,0	40,0	1,0400	A1401008EP0000401K	■
50	50,0	49,0	52,0	1,2060	A1401008EP0000501K	■



Scheibenventil, Schweißenden, DIN / Reihe 2
Butterfly valve, butt weld ends, DIN Row 2

DIN 11851-S-S, Ra < 0,8 μm
Material 1.4301/1.4307, AISI 304/304L

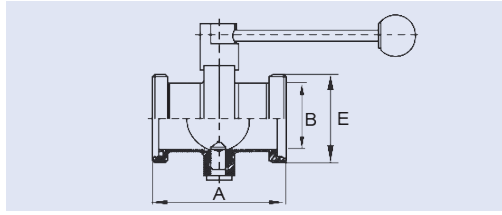
Rohranschlussmaß			Gewicht			
Nominal Pipe Size			Weight			
DN	A	B	E	kg	Artikelnummer	
					Item No.	
25	40,0	25,0	29,0	0,9930	A1401009EP0000251K	■
32	42,0	31,0	35,0	1,0800	A1401009EP0000321K	■
40	50,0	37,0	41,0	1,0400	A1401009EP0000401K	■
50	50,0	49,0	53,0	1,2060	A1401009EP0000501K	■



Scheibenventil, Klemmenden
Butterfly valve, clamp ends

DIN 32676, Ra < 0,8 μm
Material 1.4301/1.4307, AISI 304/304L

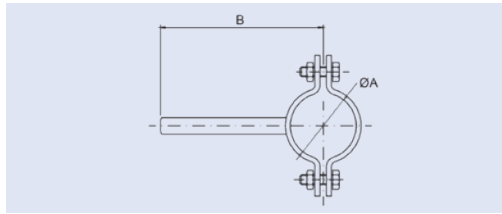
Rohranschlussmaß			Gewicht			
Nominal Pipe Size			Weight			
DN	A	B	E	kg	Artikelnummer	
					Item No.	
25	83,0	25,0	50,5	1,0720	A1401108EP0000251K	■
32	85,0	31,0	50,5	1,2080	A1401108EP0000321K	■
40	93,0	37,0	50,5	1,1800	A1401108EP0000401K	■
50	93,0	49,0	64,0	1,3660	A1401108EP0000501K	■



Scheibenventil, Gewindeenden Threaded butterfly valve, m/m

DIN 11851-G-G, Ra < 0,8 µm
Material 1.4301/1.4307, AISI 304/304L

Rohranschlussmaß				Gewicht		
Nominal Pipe Size				Weight		
DN	A	B	E	kg	Artikelnummer	
					Item No.	
25	98,0	25,0	RD 52x1/6"	1,2690	A1401208EP0000251K	■
32	106,0	31,0	RD 58x1/6"	1,4490	A1401208EP0000321K	■
40	116,0	37,0	RD 65x1/6"	1,5210	A1401208EP0000401K	■
50	120,0	49,0	RD 78x1/6"	1,7090	A1401208EP0000501K	■



Rohrschelle mit langem Schaft Pipe clamp with long shaft

Material 1.4301/1.4307, AISI 304/304L

Rohranschlussmaß				Gewicht		
Nominal Pipe Size				Weight		
DN	A	B		kg	Artikelnummer	
					Item No.	
25	28,0	72,0		0,1560	A1424106CC0000251K	■
32	34,0	75,0		0,1680	A1424106CC0000321K	■
40	40,0	78,0		0,1780	A1424106CC0000401K	■
50	52,0	84,0		0,2360	A1424106CC0000501K	■

Technische Informationen / Technical Informations

Edelstahl Getränkeleitungszubehör für Lebensmittel und Chemie Stainless Steel Sanitary Fittings for food and chemistry

Für Rohre nach DIN 11850 / DIN EN 10357, Reihe 1 und Reihe 2
For pipes to DIN 11850 / DIN EN 10357, Row 1 and Row 2

Material / material 1.4301/1.4307, AISI 304/304L.

Druckempfehlung / Pressure recommendation
DN 10 - DN 40 (**40 bar**) / DN 50 - DN 100 (**25 bar**)

Oberflächenrauheit: Mittenrauwert Ra < 0,8 µm
Surface roughness: average roughness Ra <0.8 µm

Dichtringe aus EPDM und NBR, entsprechen den Anforderungen der (FDA)
Sealing rings from EPDM and NBR, meet the requirements of the (FDA)

Material material	Betriebstemperatur operating temperature	Farbe colour
EPDM	-40°C bis / to +140°C	Schwarz / black
NBR	-25°C bis / to +110°C	Blau / blue

Gewinde Rd nach DIN 405-1
Thread Rd to DIN 405-1

Rohrabmessungen / Pipe dimensions

DIN 11850 Reihe 1 entspricht EN 10357 Serie B / DIN 11850 Row 1 corresponds to EN 10357 series B

DIN 11850 Reihe 2 entspricht EN 10357 Serie A / DIN 11850 Row 2 corresponds to EN 10357 series A

DIN EN ISO 1127 entspricht EN 10357 Serie C / DIN EN ISO 1127 corresponds to EN 10357 series C

DN DN	Reihe 1 / B row 1 / B	Reihe 2 / A row 2 / A	alte Baureihe old type	DIN EN ISO 1127 / C	ISO 2037 / BS 4825 Part 1
10	12 x 1,0	13 x 1,5	12 x 1,5	17,2 x 1,6	1/2" - 12,70 x 1,65
15	18 x 1,0	19 x 1,5	18 x 1,5	21,3 x 1,6	3/4" - 19,05 x 1,65
20	22 x 1,0	23 x 1,5	22 x 1,5	26,9 x 1,6	1" - 25,40 x 1,60
25	34 x 1,0	35 x 1,5	28 x 1,5	33,7 x 2,0	1 1/4" - 31,80 x 1,60
32	40 x 1,0	41 x 1,5	34 x 1,5	42,4 x 2,0	1 1/2" - 38,00 x 1,60
40	52 x 1,0	53 x 1,5	40 x 1,5	48,3 x 2,0	2" - 51,00 x 1,60
50		70 x 2,0	52 x 1,5	60,3 x 2,0	2 1/2" - 63,50 x 1,60
65		85 x 2,0		76,1 x 2,3	3" - 76,10 x 1,60
80		104 x 2,0		88,9 x 2,3	4" - 101,60 x 2,00
100		129 x 2,0		114,3 x 2,6	
125		154 x 2,0		139,7 x 2,6	
150		204 x 2,0		168,3 x 2,6	
200				219,1 x 2,6	